

# dave's diary....

issue 5

winter 2004

## Special Access High Rise Apartments!



**D**avco Adhesive and grouts have been used extensively in a Department of Housing high rise apartment building in Liverpool.

There are 16 two bedroom and 9 one bedroom apartments in the new building which has wheel chair ramps, intercom to apartments, and a security system.

**Scope of work:** 500m<sup>2</sup> of tiles internally and 500m<sup>2</sup> on the external patio areas.

**Products used:** SMP 2010

**Tiling Contractor:** Westside Ceramics, Lansvale

**Architect:** Frank Mosca

**Completed:** 2003

According to Graham Raymond, managing director of Westside Ceramics, Davco adhesives and grouts were used on the new project because of the quality of the products and the support services provided by Davco.

"We have always used Davco adhesives, grouts and waterproofing products since starting Westside Ceramics 30 years ago. SMP 2010, a new product from Davco, was used throughout the Liverpool project" said Graham Raymond.

**W**elcome to Issue 5 of Dave's Diary. We hope you find this issue informative, and welcome any suggestions regarding topics you would like featured in the next issue or questions for Dave's Diary.

Kind regards,  
Davco Dave

*PS. If you wish to be removed from the Dave's Diary mailing list or know someone who would like to receive a copy, please let us know by emailing [marketing@davco.com.au](mailto:marketing@davco.com.au) or fax (02) 9725 5551.*

### Davco Launch Lanko Range at Designbuild 2004 - Melbourne Exhibition Centre June 20<sup>th</sup> - 23<sup>rd</sup>



**O**nce again Davco showed a strong presence at Designbuild, this year held at Melbourne Exhibition Centre.

Of most interest was the Davco launch of the new Lanko range consisting of Floor Leveller, Concrete Repair and Structural Grouts.

Also on display were the Davco Ceramic Tile Fixing Systems and Waterproofing Membranes, as well as the new Glass Mosaic Additive.

Thank you to all staff who participated on a job well done!

## in this issue....

- Highrise Apartments project
- New Lanko Floor Leveller range
- Issue's with Glass Mosaic's
- Davco Trade Night benefits

# Glass Mosaics....

With the growing popularity of Glass Mosaics in today's market, Davco have a few suggestions that may be of assistance for selecting and installing the correct mosaic for immersed situations. For more detailed information, call your state Davco office.

## 1 Meshed Backed vs Film Faced Mosaics....

prior to application, it is important to note the difference between the two: Meshed Backed Mosaics are:

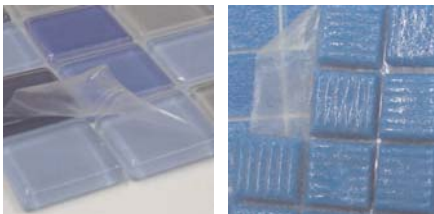
- easy to apply
- need no additional work once placed
- a mesh covers the back of the tile
- the adhesive used to fix the mesh backing can be water sensitive.



Examples of meshed backed mosaics.

Film Faced Mosaics are:

- easy to apply
- no mesh backing to impact on adhesion of the tile
- film needs to be removed after fixing
- there can be a variability in strength of adhesive fixing the film.



Examples of film faced mosaics.

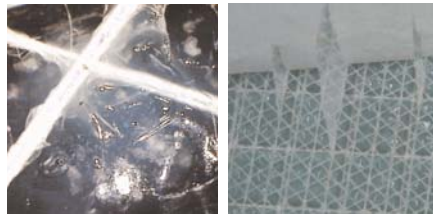
## 2 What to look for in problematic glass mosaics....

Meshed Backed Mosaics:

- the mesh should not cover more than 10% of the tile back
- the adhesive used to fix the mesh should only be on the meshing, and the combined mesh/adhesive should not

cover any more than 10% of the tile back

- the adhesive cannot be water sensitive, and the mesh cannot lose adhesion after 24 hours water soaking.



Examples of excessive adhesive on meshed backed mosaics.

Film Faced Mosaics:

- the film should not be excessively hard to remove, and should not be excessively rigid
- the film should be UV stable, such that it does not shrink if exposed to direct sunlight. Ideally the film should be breathable to facilitate drying

Mosaics which combine both film facing and mesh backing will be difficult to place onto curved or radiused surfaces.

## 3 Surface Preparation....

with masonry substrates used for the majority of immersed situations, the following need to be considered:

- Concrete - must be a wood float finish.
- Steel trowel, bull float or power float surfaces must be mechanically abraded or acid washed to remove all signs of laitance, expose the aggregate and to provide a porous, stable substrate.

## 4 Application Techniques....

as a general guide, Davco suggests:

- Priming porous surfaces - these must be primed prior to application of adhesive, using Davco Ultraprime.

- Adhesive selection - an adhesive with good open time, repositioning and high adhesion is best suited for this application. We recommend Davco Sanitized® Colorgrout mixed with the new Glass Mosaic Additive, which when combined the grout becomes the adhesive - with the added benefit of being able to utilise the wide range of colours in the Sanitized® Colorgrout range, to match the mosaic tiles yet maintain the adhesive properties.
- Grout selection - depending on the specific requirements, we recommend using Sanitized® Colorgrout with Glass Mosaic Additive, giving the added benefit of one product for the whole tiling job.

## 5 Environmental Conditions....

- these need to be taken into consideration, they include:
- High temperatures - never tile in temperatures above 35°C, and ensure the surface is not too hot as this can cause premature drying and skinning of adhesives.
  - Low temperatures - never tile in temperatures below 5°C, and ensure the surface is not water - logged/frozen as this will impact on adhesion and drying.
  - Windy conditions - protect surface from direct sunlight and winds, using covers and shades as necessary.
  - Hot and windy conditions - wet down surface prior to priming and use covers to protect from winds; prime whilst the surface is still damp, but not glistening wet.

# Davco Launch Lanko Superior Floor Levelling Range....

In a major advance, Davco have launched the LANKO Floor Levelling range, a superior group of products for repairing, filling or levelling floors in construction projects.

Leading the charge is LANKO 133 Pro Level, a cement based, internal/external self levelling, high strength underlayment designed for levelling floors prior to the installation of tiles, carpet or other floor coverings systems.

According to Peter Hollins, Davco's sales manager - technical mortars, LANKO is an international brand with a market leading position in Western Europe. We have been able to draw on the extensive overseas experience of our parent company as well as our own local expertise as Australia's largest in the field of cement and polymer blending.

LANKO 133 Pro Level has been produced at our Australian plant and is designed for local conditions. Extensive pre-launch on the job testing has been carried out in conjunction with major floor levelling contractors. They were delighted with the speed of application and the finish they could achieve with LANKO 133 Pro Level.

The result is a superior floor leveller that will bring many benefits to applicators in the floor levelling market.

Significantly LANKO 133 Pro Level can be used externally for areas such as deck areas and footpaths, as well as



internally, and is suitable for wet areas. It is compatible with commonly used adhesives, and has low water demand (approximately 20%) allowing for more rapid drying. This means floor coverings can normally be laid within 16-18 hours of installation.

LANKO 133 Pro Level is available in 20kg bags. This is complemented by LANKO 134 Pro Level Rapid for speedy applications, LANKO 135 Feather Edge, a feathering mortar, and a range of primers and additives.

For more information on the LANKO range, call the technical advisory line on 1800 653 347, email to [marketing@davco.com.au](mailto:marketing@davco.com.au) or visit our website [www.davco.com.au](http://www.davco.com.au)

## product update ....

### Sanitized® Porcelain Grout....

Davco's newest addition to the Sanitized® range is Sanitized® Porcelain Grout, an unsanded grout designed for use with polished porcelain, soft glazed tiles or any other ceramic and natural stone tile that requires a grout that will not scratch the surface.

- ✓ Unsanded
- ✓ For joints 1 - 3mm
- ✓ Available in 7 colours
- ✓ For Walls and Floors



Also containing the Sanitized® biocide, Davco Sanitized® Porcelain grout becomes part of the original mould resistant grout range, a proven formula for over 20 years.

Davco Sanitized® Porcelain Grout will suit a wide variety of decor with the range of colours including; black, silver grey, vanilla, antique white, ivory, sandalwood and light grey.

Sanitized® Porcelain Grout is available in 2kg and 10kg.

## new product ....

### Glass Mosaic Additive....

Davco's philosophy of always striving to improve our product range and provide products that greatly benefit the end user, has resulted in the creation of the new Glass Mosaic Additive.

- ✓ Use as an Adhesive or Grout Additive
- ✓ Mix with Sanitized® Colorgrout
- ✓ Ideal for Glass Mosaics
- ✓ Internal or External



When mixed with any of the wide range of colours in the Sanitized® Colorgrout range, Glass Mosaic Additive can be used as an adhesive and a grout for both walls and floors, internal and external applications.

Excellent water resistance allows Glass Mosaic Additive to be used in swimming pool installations and other wet areas, after curing.

Davco Glass Mosaic Additive is available in 1L and 5L.

## dear dave....

**Q. Recently I have found my adhesive is taking longer to go off, can you tell me why?**

A. Cold weather can make the time that it takes for your adhesive to cure much longer. Here are a few tips to overcome this:

**1. The Substrate and Preparation** - many substrates after freezing overnight do not warm up to the required temperature and hinder the ability of the adhesive to dry. Care needs to be taken to ensure the surface is completely dry - excessive moisture in or on the surface will dramatically slow down the drying process. A blower heater may be used to assist in the drying process.

**2. Adhesive Selection and Mix Water** - in cold weather particularly if the temperature is below 5°C, the adhesive

will take longer to dry, up to a couple of days especially when used with non-absorbent tiles. Under these conditions it is beneficial to use a fast drying adhesive such as Ultraflex, however in colder weather allow extra time for the adhesive to fully cure. It also helps if the mix water is at 20°C, so use warmed water if possible. Again, the use of a blower heater will assist in the drying process.

Issues can also arise when grouting in cold weather. Download the "Tiling in Cold Weather" specification from our website at [www.davco.com.au](http://www.davco.com.au) under "Specifications" or contact our technical Advisory Line on 1800 653 347 for more information.

*Do you have a question for Dave? Or maybe some feedback on Dave's Diary? You can contact Dave via email [marketing@davco.com.au](mailto:marketing@davco.com.au), fax to 02 9725 5551. All feedback is most welcome.*

## Davco Sponsor 2004 WorldSkills Australia....



Davco recently sponsored the Wall and Floor Tiling category and "Try A Trade" at the 2004 WorldSkills Australia competition, at the Brisbane Convention and Exhibition Centre 28-30 May.

Worldskills Australia is a national competition consisting of 60 trade categories, with apprentice's from 30 regions going head to head for the overall gold medal in their trade.

As a proud sponsor, Davco supplied tile adhesive, grout, primer and bucket buddies for the Wall and Floor Tiling category, and the "Try A Trade" segment in Ceramic Tiling.

Congratulations to Wall and Floor Tiling gold medal winner Anthony Micari of Sydney, NSW. Anthony will now represent Australia at the 2005 National Worldskills competition next year in Helsinki, Finland.

Congratulations also to silver medal winner John Alebakis of Perth, WA and bronze medal winner Shaun Corcoran of Canberra, ACT.

## staff corner....



**Laura Zavaroni** joined Davco in September 2003 as the NSW Sales Administrator based at Wetherill Park, and plays a key role supporting the National Business Manager, NSW and national sales representatives, often also involving daily contact with customers.

Laura brings to Davco extensive experience as a co-ordinator and has worked for Australian Quality Council and Skill Master Learning Centre.

## Davco Trade Nights earn points for Continuing Professional Development Program....

Davco trade nights now have the added benefit of providing points towards the Continuing Professional Development Program.

Normally held at local tile shops, trade nights are great networking meetings where trades people can see new Davco products and find out tips and techniques.

Under the Continuing Professional Development Program (currently a requirement in NSW and VIC, with other states soon to follow), Contractors need to accrue 100 points every three years to maintain their license - a Davco trade night can earn normally 4 points, making trade nights a worthwhile event.

For more information on the Continuing Professional Development program in your state go to [www.hia.asn.au](http://www.hia.asn.au) and click on the Continuing Professional Development link.

For more information on the next Davco trade night in your area, contact your local supplier or Davco state office.