



# Surface Preparation

Does it really make a difference?

*Davco Construction Materials*

# The Test Slab

**Davco**

- Standard 300x300x40 concrete test slab
- Half masked, half acid washed



Wet



Dry

# A Close View

**Davco**

- Treated side is darker, more porous and more consistent
- Untreated side is lighter, less porous and mottled



Close-up Wet



Close-up Dry

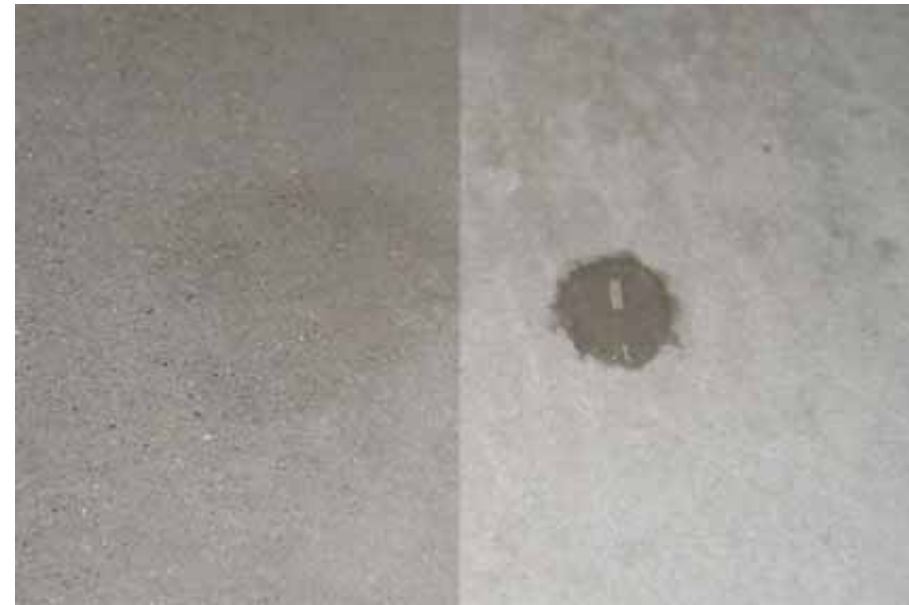
# The Drip Test

**Davco**

- Two drops of water applied to both sides
- Treated side absorbed much faster



Two drops just after application

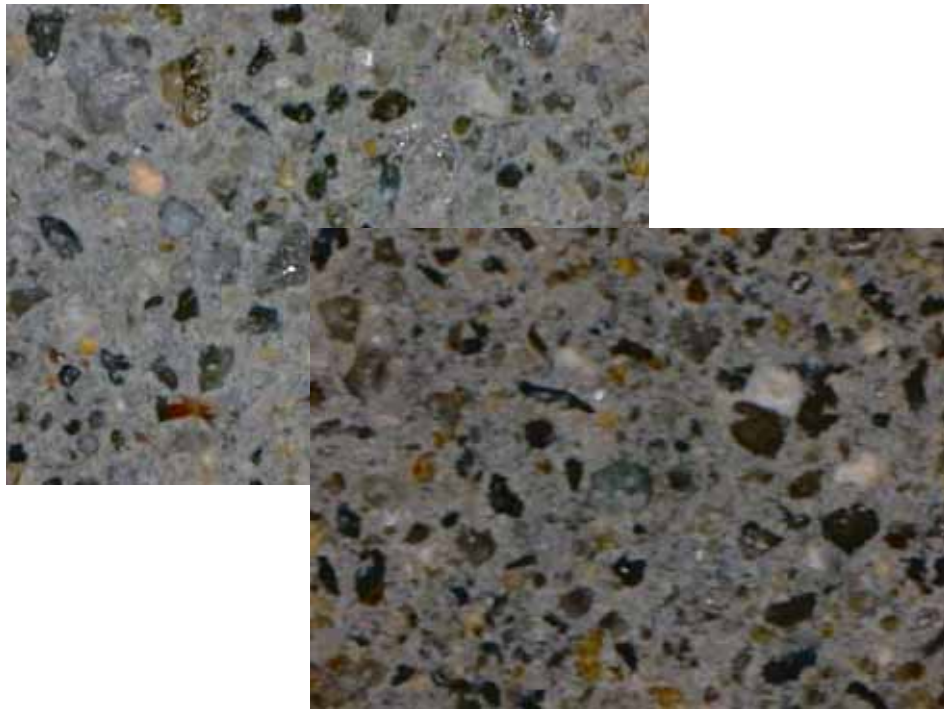


Same drops 10 minutes later

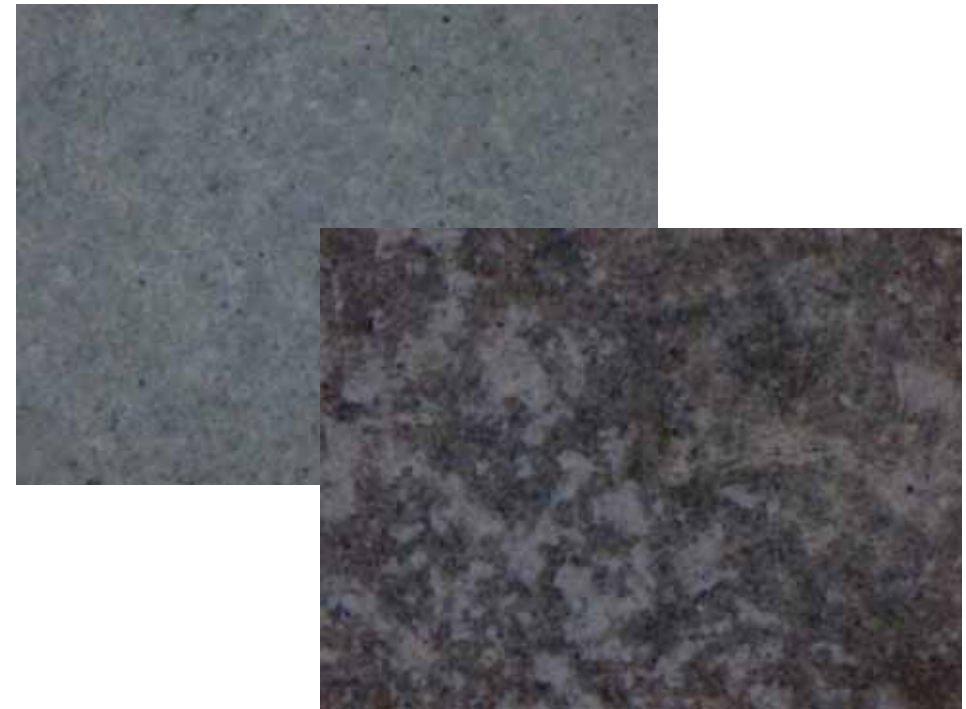
# A Much Closer Look

**Davco**

- 50x Magnification
- Untreated side shows laitance and irregularities
- Treated side is even and aggregate is visible



Treated



Untreated

# How to get the Best Bond **Davco**

- Prepare the Surface to Remove Laitance

Remember: Laitance is **weakly bound** and **less porous**

- Grind, Acid Wash, Sand Blast or Scabble
- Clean
- Prime
- Tile, vinyl, waterproofing, levellers, paint...

**Davco**

**Davco**

**LANKO**

Technical Advice

1800 653 347

[technical@davco.com.au](mailto:technical@davco.com.au)

[www.davco.com.au](http://www.davco.com.au)

[www.lanko.com.au](http://www.lanko.com.au)